

**CONTROL TRANSFORMER PRIMARY CONNECTIONS**

INPUT VOLTS	TERMINALS	JUMPER LOCATION
230/240	(H1)	(H1) TO (H3)
460/480	(H4)	(H2) TO (H4)
600	(H1)	(H2) TO (H3)
	(H1)	(H2) TO (H3)
	(H1)	(H2) TO (H3)

**CONTACT SEQUENCE CHART FOR S2**

CONTACT	POSITION	MANUF. LOCATION / TYPE
1	HAND	1R0
2	OFF	1L0
3	AUTO	2R0

\* SCHEMATIC SHOWS THIS POSITION.

**CONTACT SEQUENCE CHART FOR S2**

CONTACT	POSITION	MANUF. LOCATION / TYPE
1	HAND	1R0
2	OFF	1L0
3	AUTO	2L0

\* SCHEMATIC SHOWS THIS POSITION.

**BLOWER MOTOR FOR A1000 CONFIG.**

FLA RATING	AMPS	VOLTS
3.0	2.2 - 360	240
1.5	1.6 - 477	480
3.0	515 - 660	480
1.2	1.3 - 242	600

**YASKAWA**

THIS DOCUMENT AND INFORMATION CONTAINED HEREIN IS CONFIDENTIAL AND CANNOT BE COPIED OR DISCLOSED IN WHOLE OR IN PART WITHOUT THE EXPRESS WRITTEN CONSENT OF YASKAWA AMERICA, INC.

REV.	DESCRIPTION	ECO #	DATE	DATE
06	UPDATE CUSTOMER WIRING TO BOLD LINES	6620	10/07/15	DJP
05	ADD MISSING REF NUMBERS 101-141 ON PAGE 1	6330	6/12/15	DJP

REVISIONS

DATE: 12/16/11  
 DRAWING #: DS-A1C1.04  
 TITLE: SCHEMATIC DIAGRAM A1000 CONFIG TYPE 1 WITH OPTION PJ

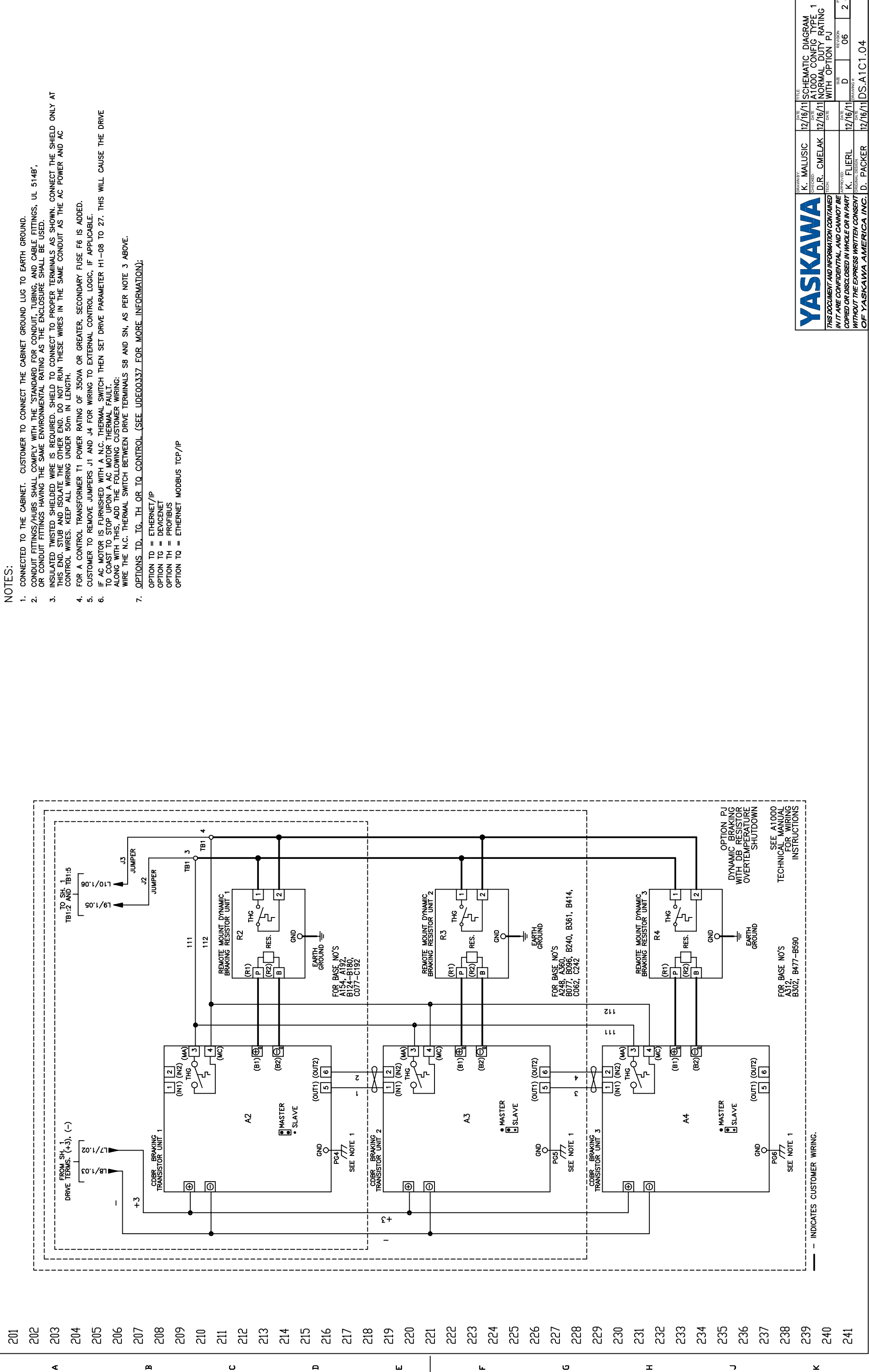
SEE SHEET 2 FOR NOTES.  
 SEE DRAWING UDE00343 FOR CUSTOMER CONNECTION TABLES.  
 SEE DRAWING UDE00337 FOR DRIVE PARAMETER SETTINGS.

JUMPER \* - INDICATES COMPONENTS NOT SUPPLIED BY YASKAWA.  
 SEE SHEET 2 FOR NOTES.

JUMPER \* - INDICATES CUSTOMER WIRING.  
 SEE SHEET 2 FOR NOTES.

101 102 103 104 105 106 107 108 109 110 111 112 113 114 115 116 117 118 119 120 121 122 123 124 125 126 127 128 129 130 131 132 133 134 135 136 137 138 139 140 141

A B C D E F G H J K



- NOTES:
1. CONNECTED TO THE CABINET. CUSTOMER TO CONNECT THE CABINET GROUND LUG TO EARTH GROUND.
  2. CONDUIT FITTINGS/HUBS SHALL COMPLY WITH THE 'STANDARD FOR CONDUIT, TUBING, AND CABLE FITTINGS, UL 514B', OR CONDUIT FITTINGS HAVING THE SAME ENVIRONMENTAL RATING AS THE ENCLOSURE SHALL BE USED.
  3. INSULATED TWISTED SHIELDED WIRE IS REQUIRED. SHIELD TO CONNECT TO PROPER TERMINALS AS SHOWN. CONNECT THE SHIELD ONLY AT THIS END. STUB AND ISOLATE THE OTHER END. DO NOT RUN THESE WIRES IN THE SAME CONDUIT AS THE AC POWER AND AC CONTROL WIRES. KEEP ALL WIRING UNDER 50m IN LENGTH.
  4. FOR A CONTROL TRANSFORMER T1, POWER RATING OF 350VA OR GREATER, SECONDARY FUSE F6 IS ADDED.
  5. CUSTOMER TO REMOVE JUMPERS J1 AND J4 FOR WIRING TO EXTERNAL CONTROL LOGIC, IF APPLICABLE.
  6. IF AC MOTOR IS FURNISHED WITH A N.C. THERMAL SWITCH THEN SET DRIVE PARAMETER H1-08 TO 27. THIS WILL CAUSE THE DRIVE TO COAST TO STOP UPON A AC MOTOR THERMAL FAULT. ALONG WITH THIS, ADD THE FOLLOWING CUSTOMER WIRING:  
WIRE THE N.C. THERMAL SWITCH BETWEEN DRIVE TERMINALS SB AND SN, AS PER NOTE 3 ABOVE.
  7. OPTIONS ID, IG, TH OR IQ CONTROL (SEE UDE00337 FOR MORE INFORMATION):  
OPTION TD = ETHERNET/IP  
OPTION TG = DEVICENET  
OPTION TH = PROFIBUS  
OPTION TQ = ETHERNET MODBUS TCP/IP

<b>YASKAWA</b>		THIS DOCUMENT AND INFORMATION CONTAINED IN IT ARE CONFIDENTIAL, AND CANNOT BE COPIED OR DISCLOSED IN WHOLE OR IN PART WITHOUT THE EXPRESS WRITTEN CONSENT OF YASKAWA AMERICA, INC.	
DRAWN BY	K. MALUSIC	DATE	12/16/11
DESIGNED BY	D.R. CMELAK	DATE	12/16/11
TECH	K. FLIERL	DATE	12/16/11
REVISION #		SIZE	D
DRAWING #		REVISION	06
		PAGE	2 of 2
TITLE		SCHEMATIC DIAGRAM	
A1000 CONFIG TYPE 1		NORMAL DUTY RATING	
WITH OPTION PJ			
DS-A1C1.04			

FOR BASE NO'S  
A248, A360,  
B077, B096, B240, B361, B414,  
C062, C242

FOR BASE NO'S  
A302, B477-B590

OPTION PJ  
DYNAMIC BRAKING  
WITH DB RESISTOR  
OVERTEMPERATURE  
SHUTDOWN

SEE A1000  
TECHNICAL MANUAL  
FOR WIRING  
INSTRUCTIONS

-- INDICATES CUSTOMER WIRING.